

# Non-GMP, Single Use 2D Bags™

## Customizable, Disposable Solutions

Aquasyn's plastic welding expertise allows for flexible bag geometries and port locations without substantial up front expense.

Contact us today to start working on a solution for your unique application.

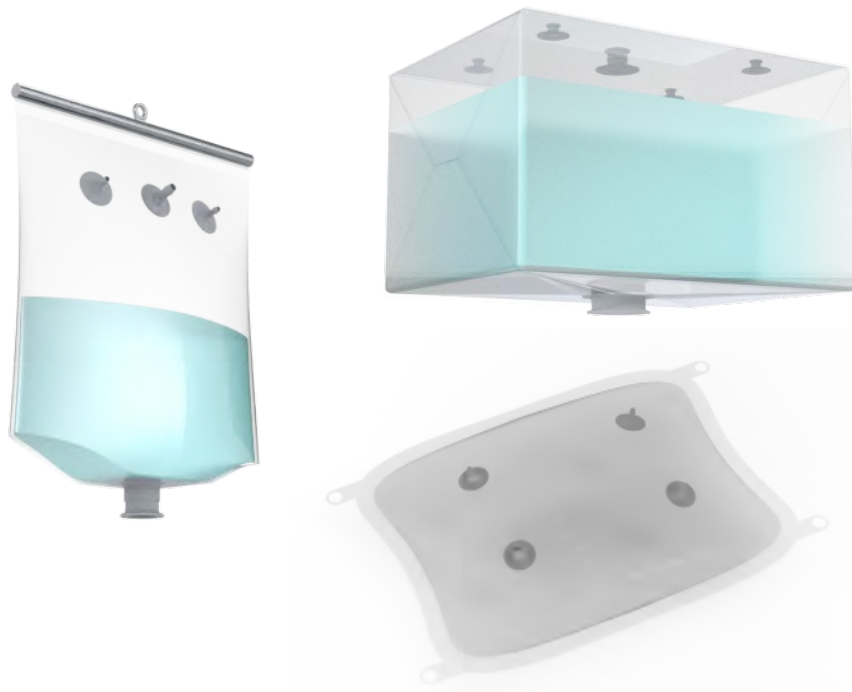


## Materials of Construction:

- All USP Class VI compliant materials
- Multilayer film
  - Inert PE inside layer
  - Durable EVOH outside layer
  - 13.5 mil thickness

## Customization Options:

- Port fittings
  - 1/8" thru 1" hose barb
  - 1.5", 3" & 4" sanitary clamp
- Geometry
  - 2D Pillow Bag
    - Up to 50L
  - 2.5D Bags™
    - Up to 30L
- Mounting
  - Integral eyelets
  - Integral hanger sleeves
  - Stainless enclosures



## 2.5D Bags™

Originally designed to offer improved space claim and flow characteristics compared to conventional bag geometries, 2.5D bags™ feature the base of a 3D bag while tapering up to a 2D profile. The 3D base allows for the use of larger sanitary clamp fittings (up to 4" TC available) as the bottom outlet, and the 2D top and sides result in a much slimmer profile. Additional ports can be added to the sides as needed, and a sleeve or eyelet(s) can be included for mounting the bag from above.



**Aquasyn LLC**

1771 S Sutro Terrace, Carson City, NV 89706

Tel: 818 350 0423

Web: [www.aquasyn.com](http://www.aquasyn.com)

E-mail: [sales@aquasyn.com](mailto:sales@aquasyn.com)

**aquasyn**

